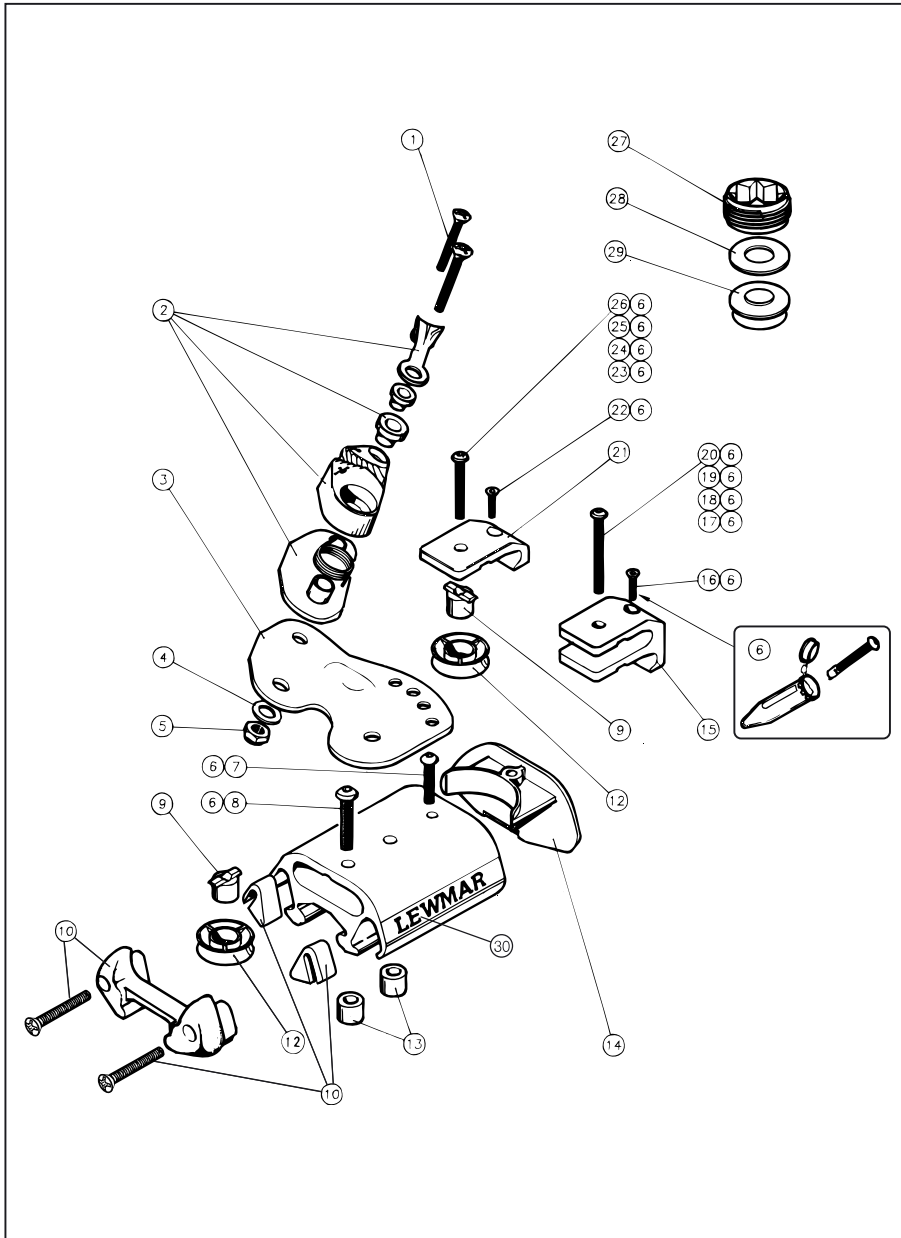


## 2. CARS

### 2.8 Size 3 End Stops



## 2. CARS

### 2.8 Size 3 End Stops

Item	Description	Part Number	Assembly Number
1	Pozi Screw	B0337	
2	Cam Cleat Assembly		B2827/Assy.
3	Cam Plate (Pair)		29173020
4	Washer M5	B1210-A4	
5	Nyloc Nut M5	B1078	
6	Grease Vial	28000810	
7	Screw M6 x 25	B4205	
8	Screw M8 x 40	25000585	
9	Control Line Bearing (& Dead Eye)	25000103	
10	Rubber Buffer x 2 (Including Fixing Screws)		29173046
12	Control Line Sheave	25000104	
13	Track Insert (Flat & Beam Track)	25000120	
14	End Stop Cover	25000111	
15	Double Sheave Strap	25000107	
16	Screw M6 x 40 - Double Cam Car Ends	B4133	
17	Screw M8 x 58 - Double Car	25000588	
18	Screw M8 x 70 - Double Ends	25000590	
19	Screw M8 x 60 - Double Cam Car	25000589	
20	Screw M8 x 70 - Double Cam Ends	25000590	
21	Single Sheave Strap	25000106	
22	Screw M6 x 25 - Single Cam Car Ends	B4125	
23	Screw M8 x 40 - Single Car	25000585	
24	Screw M8 x 55 - Single Ends	25000587	
25	Screw M8 x 43 - Single Cam Car	25000586	
26	Screw M8 x 60 - Single Cam Ends	25000589	
27	Friction Stop Adjuster		
28	Washer		29173028
29	Pressure Pad		
30	Lewmar Label	25000025	