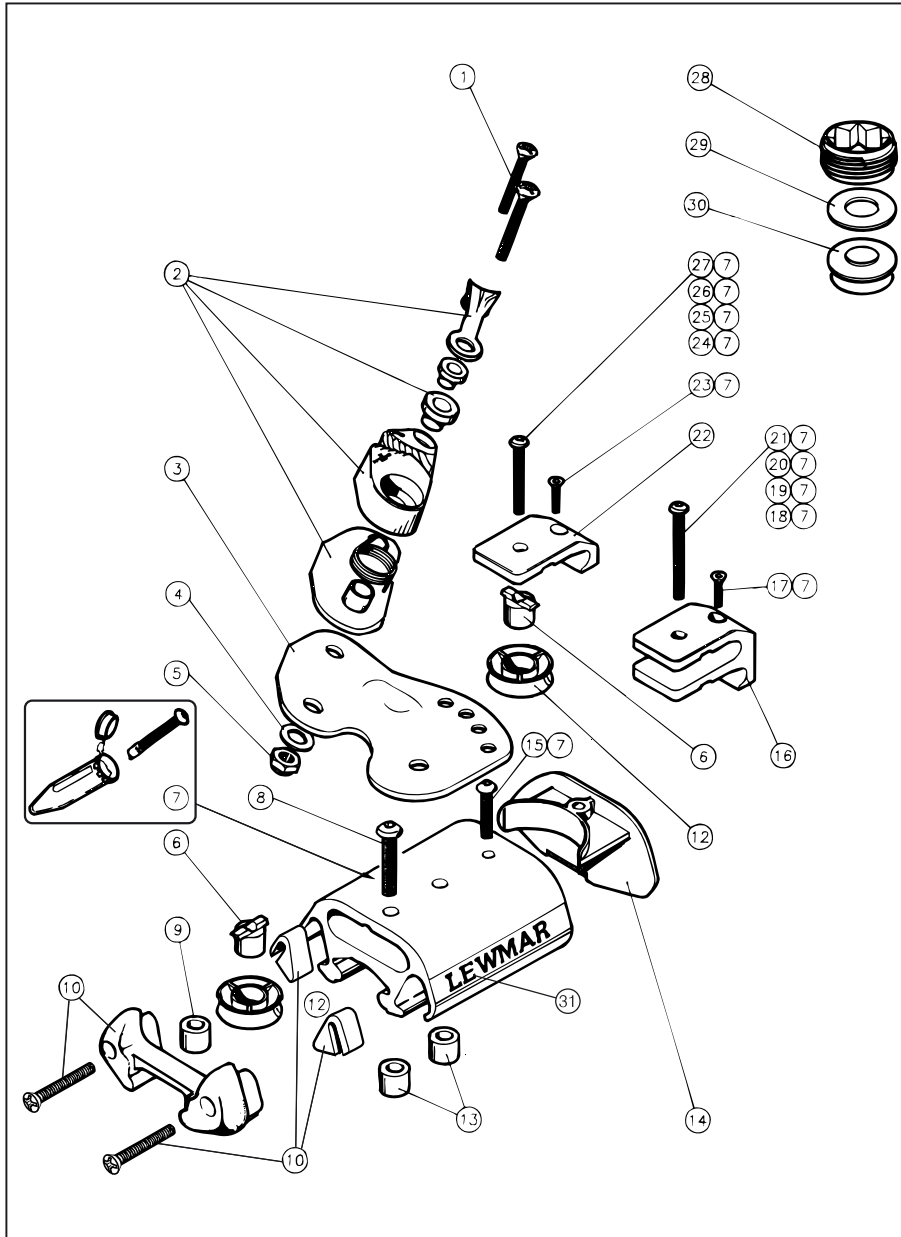


2. CARS

2.6 Size 2 End Stops



2. CARS

2.6 Size 2 End Stops

Item	Description	Part Number	Assembly Number
1	Pozi Screw	B0326-A4	
2	Cam Cleat Assembly		B2830/Assy.
3	Cam Plate (Pair)		29172020
4	Washer M5	B1210-A4	
5	Nyloc Nut M5	B1078	
6	Control Line Bearing	25000037	
7	Grease Vial	28000810	
8	Screw M6 x 35	25000592	
9	Sleeve (For Dead Eye)	B4304	
10	Rubber Buffer x 2 (Including Fixing Screws)		29172046
12	Control Line Sheave	25000031	
13	Track Insert (Flat & Beam Track)	B4301	
14	End Stop Cover	25000036	
15	Screw M5 x 20	B4201	
16	Double Sheave Strap	25000043	
17	Screw M5 x 35 - Double Cam Car Ends	B4132	
18	Screw M6 x 50 - Double Car	25000594	
19	Screw M6 x 60 - Double Ends	25000596	
20	Screw M6 x 53 - Double Cam Car	25000595	
21	Screw M6 x 70 - Double Cam Ends	25000597	
22	Single Sheave Strap	25000038	
23	Screw M5 x 20 - Single Cam Car Ends	B4131	
24	Screw M6 x 35 - Single Car	25000592	
25	Screw M6 x 50 - Single Ends	25000594	
26	Screw M6 x 38 - Single Cam Car Ends	25000593	
27	Screw M6 x 50 - Single Cam Ends	25000594	
28	Friction Stop Adjuster		
29	Washer		29172028
30	Pressure Pad		
31	Lewmar Label	25000022	